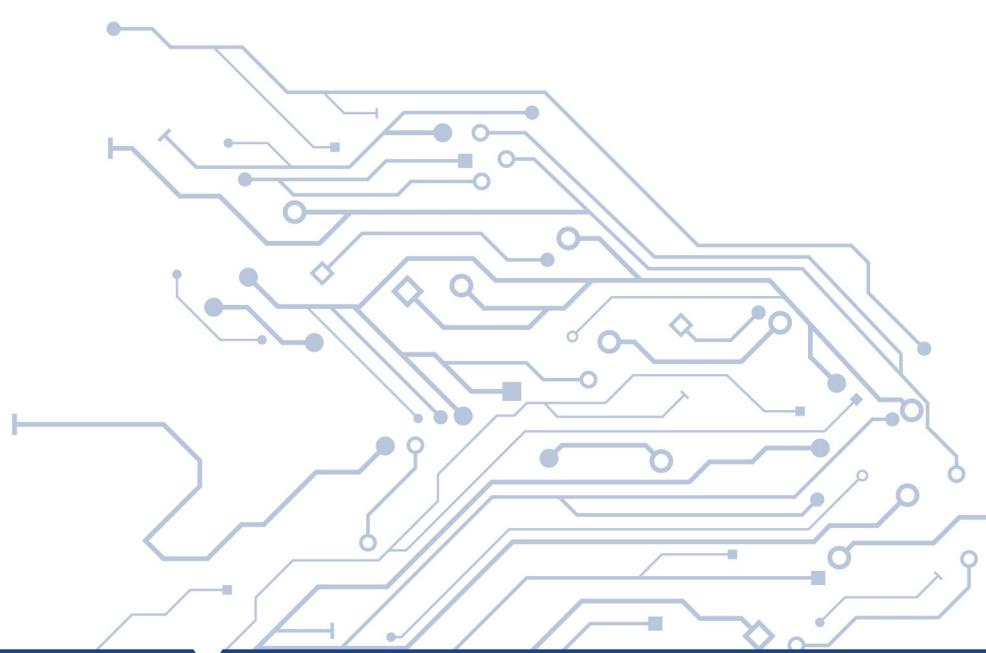


DSP215



Revisione: **1.1**
Data di emissione: **14/03/2024**
Cod. **HG00079ENGP**



1 Technical Specification

1.1 Technical DATA DSP215

Technical Data	
Dimensions	Control Unit
Screen size	21.5"
Device (WxHxD) [mm]	529.5x316.30x23.7
Device cutout [mm]	503x298
Mounting Type	Pannel mounting with screw and gasket
Display	
Active display area [mm]	476.6 (W)x268.11 (H)
Display Mode	16:9
LCD Type	TFT-LCD
Resolution (pixels format)	1920 x 1080
Display Color	16.7M
Pixel Pitch(mm)	0.248(H)x0.248(V)
Brightness(nits)	250cd/m ²
Contrast Ratio	3000:1
Viewing Angle	178(H)/178(V)
Response Time	5ms
Backlight	LED backlight
Touch Screen	
Standard touch options	10 fingers capacitive touch
I/O Interface	
VIDEO PORT	<ul style="list-style-type: none"> ■ HDMI ■ DVI ■ VGA
Touch screen port	<ul style="list-style-type: none"> ■ USB type B
Power supply	
Power	24 Vdc
Power Consumption	≤28W
Power connector	DDC 2 poles
General data	
OSD Control	Auto adjust, brightness, contrast, Hori./Vert. Position, clock, phase, color, language
Menu	English (other languages supported)
Ambient conditions, operation:	0...50°C, 10...95% rel. air humidity, without

Technical Data	
	condensing
Ambient conditions, storage/transport	-20...60°C, 10...95% rel. air humidity, without condensing
Certificate approvals	CE, RoHS,CCC,FCC,ISO9001
Order Code	
Country of origin	Assembled in Italy

1.2 Mechanical drawing

