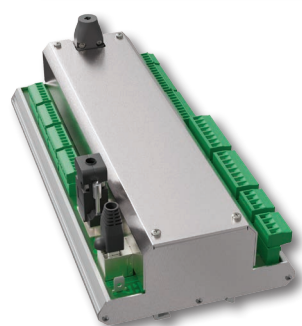


Pannelli di controllo basati su Windows® CE o Linux

Sistemi embedded utilizzati come pannelli operatore touch screen (HMI), ma anche come PLC e CNC. Integrando il software CNI e schede hardware aggiuntive, consentono di gestire I/O e muovere assi di macchine automatiche.

A seconda delle configurazioni scelte, le nostre interfacce HMI con PLC integrato sono unità di automazione complete per l'industria 4.0.



Esempio: verifica peso in linea con Moduli hw Custom CNI.

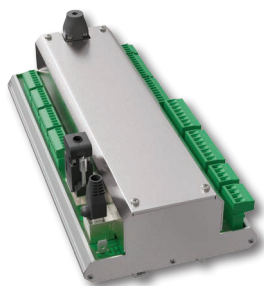
iCE CARATTERISTICHE TECNICHE	
Monitor 7" wide screen a colori	Touch-screen resistivo a 4 fili
Tastiera impermeabile	ARM Cortex A8 1 GHz
Ram DDR3 da 512 MB	4 GByte Memoria flash integrata
Porta USB	Can Bus
RS232/RS422	1x RJ45 Lan 10/100 Mbit
24 VDC +-10%	Windows® CE / Linux O.S.

Esempio: MDC Machine Data Collector. Sistema IIoT per Industria 4.0. Acquisizione e verifica segnali da sensori applicati su macchine utensili.

iPC410 CARATTERISTICHE TECNICHE	
Monitor 10" wide screen a colori	Touch-screen resistivo a 5 fili
ATOM J1900 QUAD CORE 2GHz	RAM 4 Gbyte DDR3 SODIMM
Storage SSD mSATA 64 GByte	2x Usb 3.0 2x Usb 2.0
1x RS232	2x RJ45 100/1000 MBit
VGA + HDMI + Audio	9-36 VDC
Windows® / Linux O.S.	

Control panels based on Windows® or Linux

The iCE systems are embedded systems used as Touch Screen operator panels (HMI), but also as PLC and CNC. Integrating the CNI software and additional hardware boards, they can manage I/O and move axis of automatic machines. Depending on the chosen configuration, our HMI with integrated PLC are complete automation units for the Industry 4.0.



Example: in-line Weight check using CNI custom hw modules.

Example: IIoT system for Industry 4.0. Acquisition and verification of signals coming from sensors applied on Working centers.

iCE	TECHNICAL DATA
7" wide screen colour graphic display	Resistive Touch Screen 4 wires
Waterproof keyboard	ARM Cortex A8 1 GHz
DD3 RAM - 512 MB	4 GByte On-Board flash storage
USB Port	Can Bus
RS232/RS422	1x RJ45 Lan 10/100 Mbit
24 VDC +-10%	Windows® CE / Linux O.S.

iPC410	TECHNICAL DATA
10" wide screen colour graphic display	Resistive Touch Screen 5 wires
ATOM J1900 QUAD CORE 2GHz	RAM 4 Gbyte DDR3 SODIMM
Storage SSD mSATA 64 GByte	2x Usb 3.0 2x Usb 2.0
1x RS232	2x RJ45 100/1000 MBit
VGA + HDMI + Audio	9-36 VDC
Windows® / Linux O.S.	